

Cascading Style Sheets: CSS

New Media Class by Gloria Boone

What is CSS

- ▶ CSS is a style sheet that can tell the browser how to display content.
- ▶ You can have different CSS sheets that display the same content in different ways (color; font; positioning...)
- ▶ CSS can be in the document
 - ▶ In the head of the document
 - ▶ Or in the HTML tag
- ▶ CSS can be linked to an external style sheet as a CSS document



```
▶ <html xmlns="http://www.w3.org/1999/xhtml">
▶ <head>
▶ <title>Some CSS</title>
▶ <style type="text/css">
▶ <!--
▶ body,td,th,h3,h4 {
▶     font-family: Geneva,Arial, Helvetica, sans-serif;
▶     font-size: medium;
▶     color: #336600;
▶ }
▶ h1,h2 {
▶     font-size: x-large;
▶     color: #006600;
▶ }
▶ -->
▶ </style></head>
▶ <body> My content goes here
▶ </body>
▶ </html>
```



selector {property:value}

- ▶ p
{
text-align:center;
color:gray;
font-family:geneva;
}
- ▶ Paragraph tag is a selector
- ▶ Curly tag
- ▶ Property: value **SEVERAL CAN BE USED**
- ▶ Curly tag

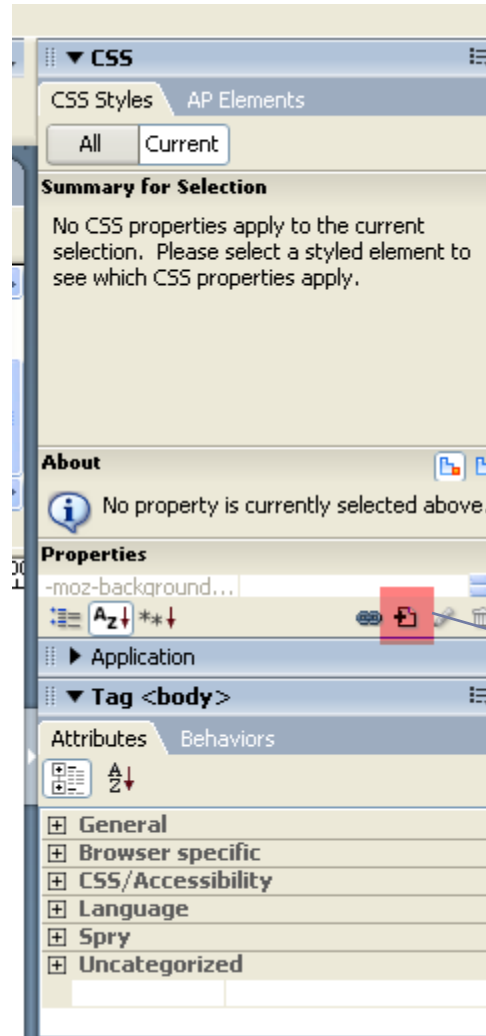


Grouping selectors

- ▶ h3, h4, h5 {
- ▶ font-size: medium;
- ▶ color: #006600;
- ▶ }

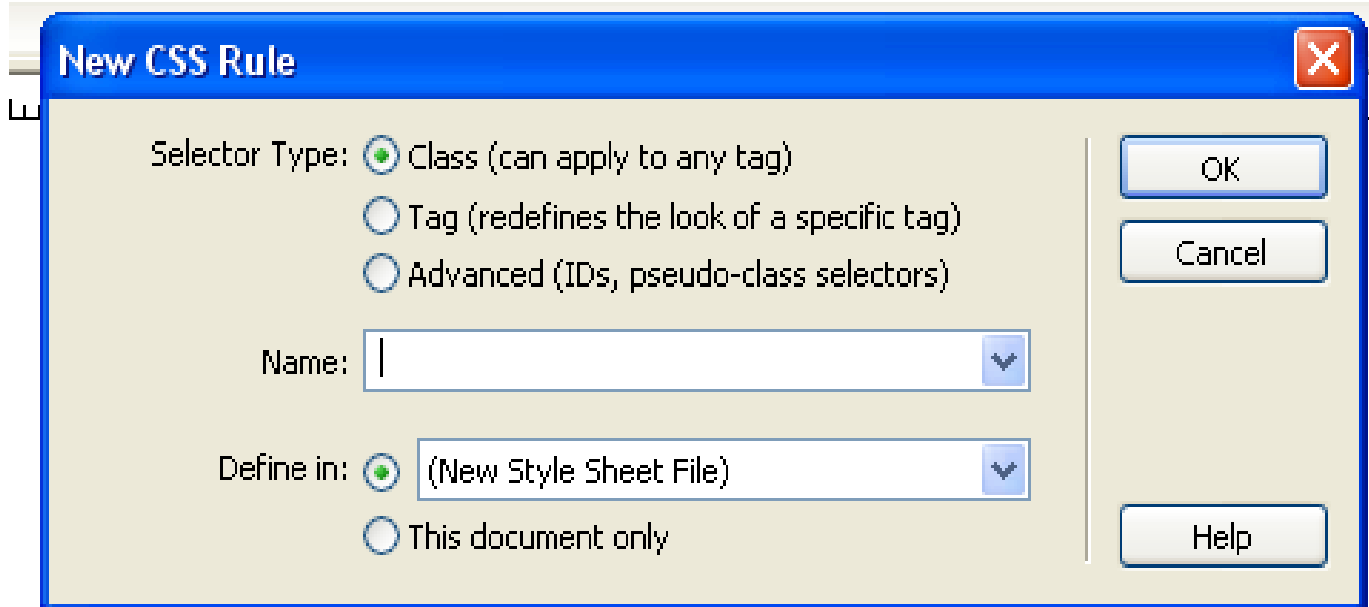


Dreamweaver CSS Menu



Add a new CSS style

Creating a CSS Rule in Dreamweaver



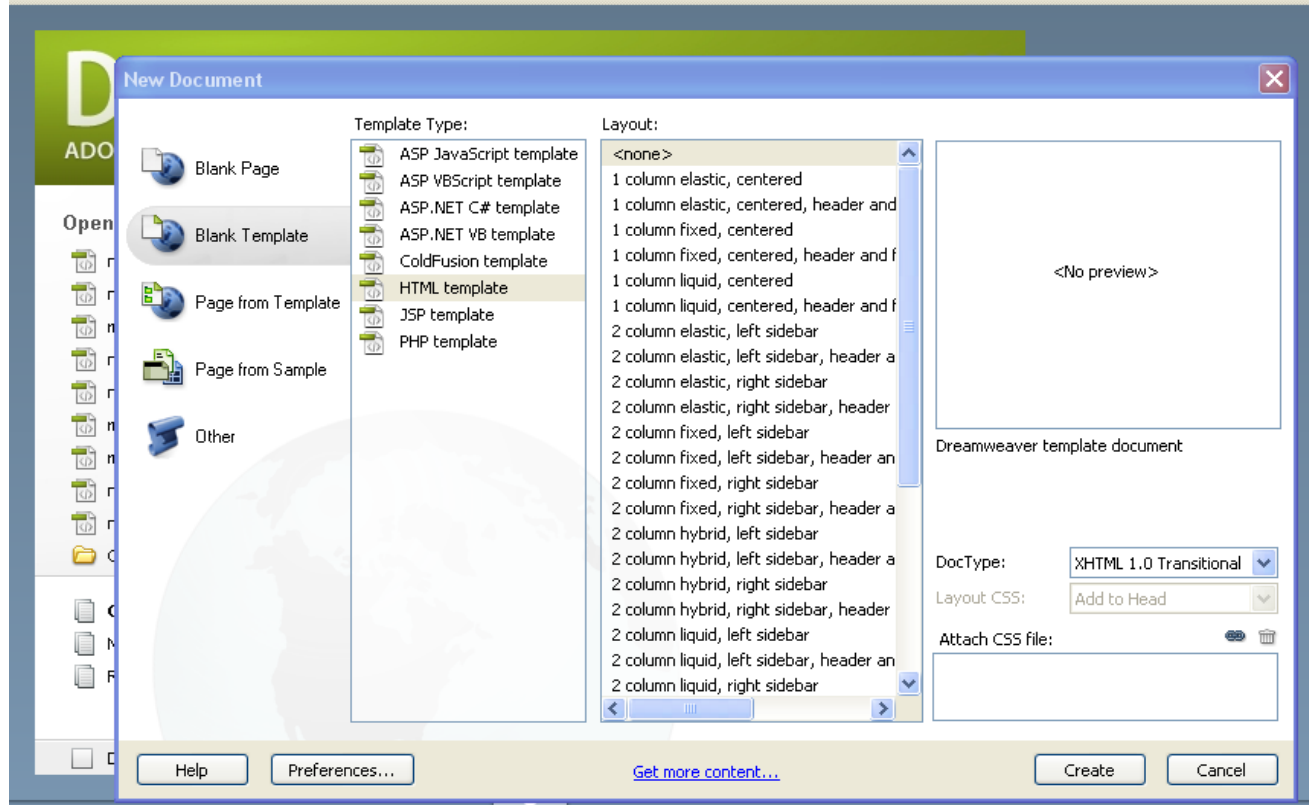
Class is used on any defined tag

Tag or element is used on all instances of a tag such as <p> or <H1>

Advanced or Id or pseudo-class is a unique rule applied to only one item



Predefined CSS layouts in CS3 & CS4



- ▶ <http://www.digitalfamily.com/dreamweaver/css-tutorials/editing-CSS-layouts.html>